



# WATER TO THE EXTREME

SWIMMING | FITNESS | THERAPY | FAMILY FUN

 MASTER SPAS®





Velocity Injector Plate

# HD PERFORMANCE

INTRODUCING

HD PERFORMANCE IN AN SD WORLD

**VIP**  
VELOCITY INJECTOR PLATE  
TECHNOLOGY



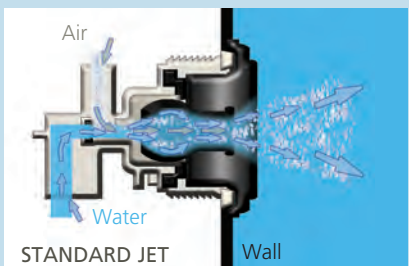
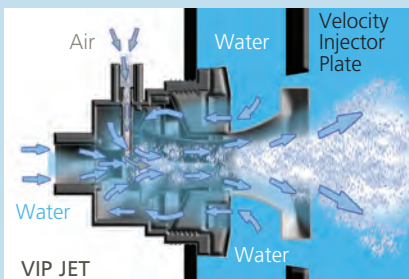
## VIP TECHNOLOGY USHERS IN AN ENTIRELY NEW CLASS OF JETTED SWIM SPA—THE HD SWIM SPA!

Think about a high-definition, flat screen TV versus a standard-definition, color-tube TV. One, you couldn't wait to hang on your wall, and made your house the preferred location to catch the big game or don't-miss season finale. The other is gathering dust in your garage. They both call themselves TVs, but which one did you prefer? Can you recall the first time you watched a show in full HD and then switched back to an SD channel? You may have thought your TV was broken, your eyes had gone bad or BOTH.

**Introducing the world's only high-definition line of swim spas, the H2X Series by Master Spas.**

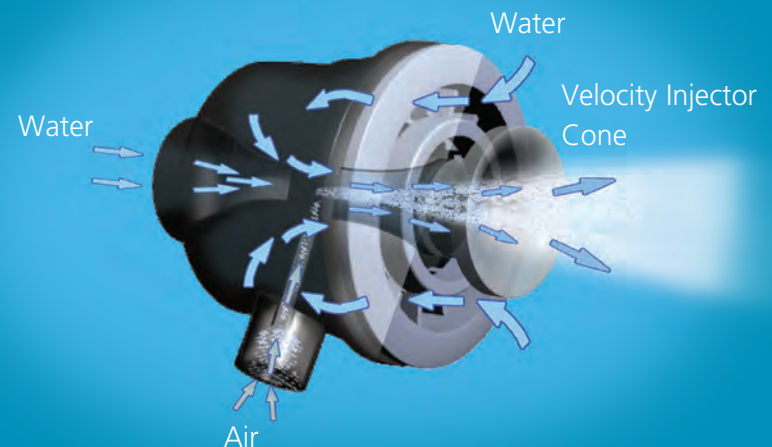
No other jetted swim spa even comes close. Our VIP Technology brings you HD performance in an SD world.

## A STROKE OF GENIUS



### HERE'S HOW IT WORKS:

The Velocity Injector Cones, along with the water flowing through the jets, help to create negative pressure around the perimeter of the jet face allowing water to be pulled through the front grill, into the main water stream. The result is an IMPRESSIVE 45% performance increase over a standard jetted swim spa.



VIP TECHNOLOGY

# H2X in HD



## PREMIUM JETTED SWIM AND FITNESS SPAS

H2X premium jetted swim and fitness spas provide sleek styling and features that include flat floors, spirited jets and form-fitting seats. Whether you use it for fitness and exercise, family enjoyment, therapy or just plain relaxation and solitude, these extraordinary swim and fitness spas offer something for everyone. Plus, as the trusted leader in home spa technology, Master Spas provides expert design and craftsmanship you can enjoy with true peace of mind.



## H2X SWIM SPAS IN HI-DEF

We invite you to take a glimpse into a day-in-the-life of an H2X premium jetted swim or fitness spa to learn how it will quickly become one of the most valued amenities in your home.

# FITNESS

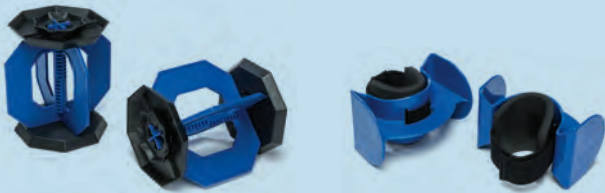
## MORNING – TIME FOR FITNESS, EXERCISE AND SWIMMING

Exercising in the morning before your busy day begins is an excellent way to stay in shape, but who has time to drive to the fitness center, park, check-in and fight the crowds before you can start your routine? With an H2X premium jetted swim or fitness spa, your fitness center is at home. There's no driving, no membership, no crowd, no waiting. The H2X and your workout are never more than a few steps away.

Once in the water, you'll find that the H2X has a large flat floor with no hidden obstacles, making it the perfect choice for a variety of fitness exercises. You can jog in place against a gentle current, use a kickboard or use the H2Xercise System that includes a rowing kit, resistance bands, H2Xercise Bells, H2Xercise Fins, the H2Xercise Aquatic Workout book and comes standard with all models\*. With the jets off, you can experience the benefits of resistance training and range-of-

motion exercises. Water buoyancy naturally makes exercising easy on the joints and this approach offers a total mind and body workout that is effective, yet gentle.

With an H2X premium jetted swim or fitness spa, you can enjoy the full-body effects of aquatic exercise with time-saving convenience, all in the privacy of your own backyard—every day, in any season.



### H2XERCISE BELLS

This unique design allows for adjustability in four varying resistance levels to accommodate any user and fitness level. Whether the goal is rehabilitation or high-level performance training, these are the dumbbells for you.

### H2XERCISE ANKLE FINNS

These form fitting, comfortable fins provide a smooth accommodating resistance in every direction that you move. They allow you to strengthen the muscles that you use every day in an effective and efficient manner.

### H2XERCISE: AQUATIC WORKOUT FOR EVERY FITNESS LEVEL

A new way to exercise. Dr. Rick McAvoy, PT, DPT, CSCS and Professor of Hydrotherapy has authored an exercise program written exclusively for the Master Spas line of swim spas. This program is designed specifically to help you get the most out of your swim spa and is presented in an easy-to-follow format.

### H2XERCISE: ROWING KIT AND RESISTANCE BANDS

Easy to connect, use the rowing kit for upper body strength and endurance training. When you're done, just release the four fastening points and store it in the durable H2Xercise bag for your next session. Multiple resistance bands and attachments are perfect for a wide variety of strength and flexibility exercises.

\*Free with the warranty registration of your spa



## H2XERCISE

Aquatic resistance training has just been made easier with the H2Xercise equipment designed by Master Spas together with aquatic fitness/conditioning expert Dr. Rick McAvoy PT, DPT, CSCS.

“As a Doctor of Physical Therapy as well as a Certified Strength and Conditioning Specialist who has specialized in Aquatic Therapy for over 25 years, I have treated numerous types of orthopedic and neurological conditions. I have witnessed first hand the power and potential that the water provides in assisting people to improve their physical as well as psychological well-being.

Whether your goal is to improve flexibility, balance, coordination, your level of fitness or incorporate aquatic cross training into your existing fitness program, Master Spas swim spas are the perfect aquatic machine.”

- Dr. Rick McAvoy PT, DPT, CSCS





# FAMILY FUN

## AFTERNOON – FAMILY FUN

When afternoon rolls around, it is time to turn up the fun and enjoy the H2X with your kids or friends, because as remarkable as the H2X is for fitness, we also designed it to be the perfect backyard fun center, year-round. Regularly-sized spas are great for relaxation, but the larger H2X models provide the size needed for more fun with more people. With sleek styling, standard waterfalls and colorful LED lighting, there's something for everyone to enjoy. The extra length of the H2X provides enough space for children or grandchildren to play and release energy, while you relax within the cocoon of the therapeutic jets. With an H2X premium jetted swim or fitness spa, you can create an ideal backyard oasis for the entire family.

### EASY FOR KIDS TO LEARN

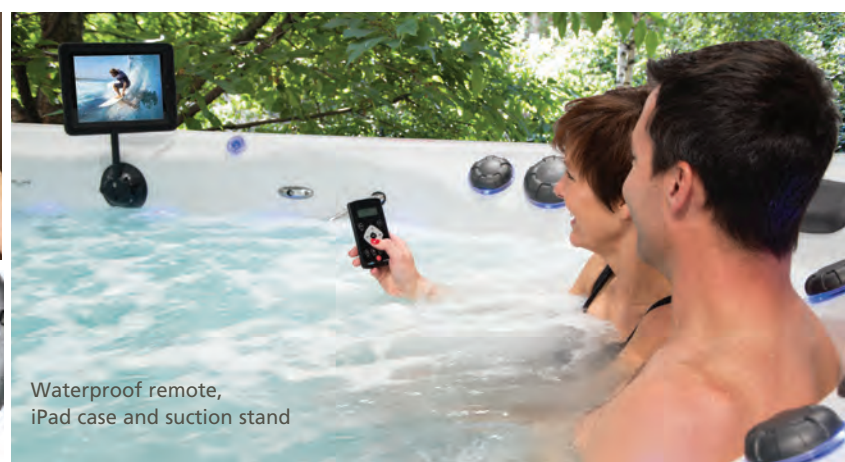
All H2X fitness spas are ideal for year-round enjoyment and learning. Children can learn how to swim for the very first time in a very safe and controlled environment where they feel comfortable and at ease. Installation takes only one day, but the enjoyment will last a lifetime!

### WHAT DOES FUN SOUND LIKE?

The Deluxe Fusion BT Sound System is an available option on any Master Spas Swim Spa. The rugged design and water resistant housing includes a docking station, FM tuner, USB connector, 3.5 mm connector and Bluetooth technology. This allows you to connect to most any source and enjoy your favorite music while relaxing, exercising, or swimming in your backyard fun center. The hand-held, waterproof remote makes it simple, while the speakers and subwoofer makes it sound great! Just push play. This system even enables you to watch your favorite shows or movies through your iPad®! Ask your dealer about our waterproof iPad® case and heavy duty suction stand accessories that allow you to position your "cinema" anywhere in the spa.



Deluxe Fusion BT Sound System



Waterproof remote, iPad case and suction stand

# THERAPY

NIGHT – THERAPY, RELAXATION, SOLITUDE

After the stresses of a demanding day, an evening with an H2X is just the kind of relaxation you need. Whether your goal is to improve circulation, relieve pressure on your joints, soothe aching muscles or simply melt away the tension and fatigue of the day, sit back and relax while the H2X premium jetted swim or fitness spa delivers an unparalleled spa experience. Two powerful pumps give you complete control of the strength of the jets – from a gentle touch to maximum muscle-kneading force – you decide.





Xtreme Therapy Cove



Waterline LED Lighting and Water Features

## RELAX TONIGHT. YOU DESERVE IT.

The Xtreme Therapy Cove allows you to find the optimum position to deliver a complete therapeutic massage for your lower back, hips, thighs and calves.

Experience the reverse molded StressRelief™ Neck and Shoulder Seat, available on select models, featuring specially designed shoulder jets that apply a tension-relieving massage where it's needed most, across the neck and shoulders.

All H2X swim spas feature our legendary therapy seating, ergonomically designed to wrap you in comfort while delivering the ultimate hydrotherapy. A unique pattern of jets provides complete coverage for your back, while additional jets focus on the hips, thighs, calves, arms, wrists, and hands.



StressRelief™ Neck and Shoulder Seat



Xtreme Therapy Cove



## CLEAN, REFRESHING WATER

At Master Spas, we want you to spend more time enjoying our products and less time taking care of them. That's why, over a decade ago, we developed the exclusive and patented EcoPur® System.

Taking a hint or two from Mother Nature, the EcoPur® System incorporates a specific blend of minerals into one of the filters in your swim spa. As the water rushes into, over, and through the EcoPur® filter it is not only filtering large contaminants from the water. The water is also absorbing the special

blend of minerals, including copper (Cu) and Zinc (Zn), which create an electro-chemical reaction that eliminates most microorganisms and removes heavy metals from the water, resulting in sparkling water that feels softer and doesn't have the harsh chemical smells associated with normal systems.

### OZONE SYSTEM

Every H2X Swim Spa by Master Spas also features an advanced Ozone system that kills pathogens and microorganisms, destroys organic materials, and oxidizes non-organic contaminants to keep your water clean and refreshing every time you use your swim spa.



# Mast3rPur™

## MAST3RPUR™ WATER MANAGEMENT SYSTEM

The synergistic blend of three proven natural sanitizers provides water quality and spa care not found in any other spa, including salt systems. The Mast3rPur™ Water Management System dramatically reduces harsh chemical consumption, like chlorine, while removing many heavy metals and chloramines for water that looks crystal clear, smells fresh, and has a silky feel. This innovative, exclusive benefit is due to the power of three elements.

### THE POWER OF 3:



When absorbed in water, ozone kills pathogens and microorganisms, destroys organics, and oxidizes non-organic contaminants.

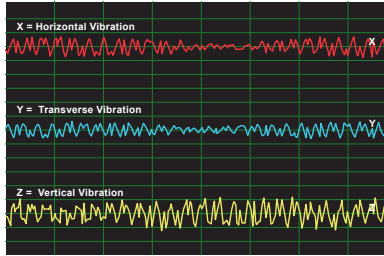


When germicidal UV-C light is exposed to water it inactivates microorganisms and breaks down chloramines.

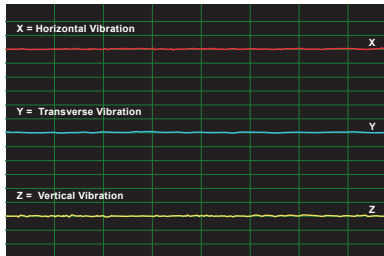


The unique combination of copper and zinc in the patented EcoPur® filters creates an electro-chemical reaction to eliminate many microorganisms and remove heavy metals such as lead and mercury.

Each of the three elements are proven effective water management tools but when they are combined, their synergy makes them dramatically more effective through a chemical reaction known as Advanced Oxidation Process (AOP). AOP is superior to other systems because it produces powerful hydroxyl radicals that maximize disinfection and reduces chloramines fast and effectively. Clean, clear, fresh smelling, and better feeling water is available now with less work...another innovative, exclusive benefit only available through Master Spas.



Industry Standard



Master Spas Noise Reduction System

## NOISE REDUCTION SYSTEM

Our exclusive Noise Reduction System is a result of advanced engineering innovation that reduces pump and motor vibration by 150% over the industry standard mounting system making it even easier to find your quiet place. If you listen close enough... you won't hear it.

### LESS NOISE = MORE RELAXING

The heart of Master Spas Noise Reduction System (NRS) is the unique motor mount developed by Master Spas world class engineers and our industry leading suppliers. The NRS is featured on Pump 1 on every H2X Swim Spa.



## EASY TO OWN, EASY TO ENJOY

Master Spas builds our swim spas to be used year-round in every possible climate. Environmentally-friendly Icynene foam insulation makes H2X Swim Spas by Master Spas the most energy efficient swim spas in the industry. Every swim spa is built to not only meet but to exceed the stringent California Energy Commission (CEC) efficiency standards. All resulting in what really matters — a superior swim spa experience and savings for you and your monthly utility bill.

### ADVANTAGES OF ICYNE NE INSULATION OVER URETHANE INSULATION

- Icynene Foam retains its insulating value for the life of the product unlike Urethane based foam that can lose 50% of its insulating value within two years
- Icynene does not produce any harmful off-gas
- Icynene is mold and mildew resistant
- Icynene is the only insulating material certified by the Envirosdesic Certification Program for healthier air quality



## OPTIONS

Every H2X premium jetted swim and fitness spa comes standard with everything you need to get you on your way to meeting your health and fitness goals including the H2Xercise System\* featuring a rowing kit and resistance bands plus our exclusive H2Xercise Bells, H2Xercise Fins, and H2Xercise Aquatic Workout book designed for use in your swim spa. Premium grade stainless steel handrails, colorful LED lighting, entry and exit stairs, and a textured, slip free floor are also standard on every model.

You may wish to enhance your experience with some optional features including a marine grade music system to play your favorite workout music on or even a Wi-Fi module that not only allows you to control your swim spa from anywhere, but that you can also pair with your iPad® and waterproof case and stand to stream your favorite movies or shows while working out. Plus, add the advanced Mast3rPur™ Water Management System to select models for the absolute cleanest and clearest water of any swim spa on the market today.

## SKIRT OPTIONS

Match the color of your spa with the skirting of your choice for a distinctive combination that's truly your own. Choose from the standard DuraMaster Premium™ polymer skirting that is so durable, it comes with a lifetime warranty. The optional MasterTech™ skirting has the look of real wood, but is virtually maintenance free.

Standard DuraMaster Premium™ Skirting



Portabello

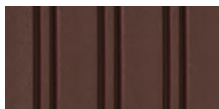


Espresso

Standard DuraMaster II Ultra Poly Skirting\*\*



Portabello



Espresso

Optional  MasterTech™  
Premium Synthetic Skirting



Walnut Grove



Driftwood

## SHELL OPTIONS



Sterling Silver Marble



Sierra

\*FREE with the warranty registration of your spa  
\*\* Standard on Deep models only.

## PREMIUM OPTIONS

### F FUSION SOUND SYSTEM

**Deluxe Fusion BT Sound System** includes a docking station and an FM Tuner controlled through the water resistant remote control. It also includes four marine grade speakers, subwoofer and Bluetooth capability.

**Deluxe Fusion Air Sound System** includes Bluetooth capability for streaming your favorite music plus an FM Tuner controlled through the water resistant remote control, four marine grade speakers, and a subwoofer.

**W WI-FI MODULE** Remotely control the operations of your spa via an optional integrated Wi-Fi module that works with a spa control app.

### M MAST3RPUR™ WATER MANAGEMENT SYSTEM

This water management system is a synergistic blend of three proven natural water sanitizers that when combined makes them dramatically more effective through a chemical reaction known as Advanced Oxidation Process. This results in clean, clear, fresh smelling, and silkier water. The Mast3rPur™ option comes equipped with the QuietFlo Water Care System, a 24-hour circulation pump.

**A AFTERGLOW JET PACKAGE** illuminates the larger crystal-like jets in the Therapool D and in the hot tub side of the Trainer 19 and Trainer 19D.

**L LED LIGHTING** comes standard on most H2X models including waterline LEDs, illuminated waterfalls and topside controls. Lighting is optional on Therapool SE and Trainer 12.

**J STAINLESS STEEL JETS** come standard on most H2X models, and are optional on Therapool SE and Trainer 12.

**S STEEL FRAME** The powder coated box steel frame provides the toughest, most durable frame you'll find anywhere.







## TRAINER 19

### TWO BODIES OF WATER, TWO DIFFERENT TEMPERATURES

Enjoy a swim and the full-body effects of aquatic exercise with water set to a personal comfort zone in the 80's. On the other side, settle into the hot tub with the temperature set up to 104°. This full-size hydrotherapy hot tub with 31 jets and ergonomic seating was designed to give your mind, body, and spirit a thorough rejuvenation. Say good-bye to the tensions, aches, and stresses of the day. It's more than a sensation; it's your solution.



## TRAINER 19 & 19D



Dimensions	231" x 94" (587 cm x 239 cm)
19 Depth	51" (130 cm)
19D Depth	60" (152 cm)
19 Water Capacity	2,010 Gallons (7,609 L)
19D Water Capacity	2,280 Gallons (8,631 L)
19 Weight: Dry/Full	2,460 lbs (1,116 kg) / 20,335 lbs (9,223 kg)
19D Weight: Dry/Full	2,900 lbs (1,315 kg) / 23,030 lbs (10,446 kg)
Propulsion System	VIP Technology
Power Requirement	100 Amp System
Pumps	4
Stainless Steel Jets	48 (Including 4 VIP Jets)
Waterfalls	5
Ozone System	Standard
Filtration	EcoPur®
LED Lighting	Waterline
Exclusive Feature	Noise Reduction System
Exclusive Accessories	H2Xercise System*
Premium Options	<b>F W M A S</b>



## TRAINER 18

Dimensions	215" x 94" (546 cm x 239 cm)
Depth	60" (152 cm)
Water Capacity	2,235 Gallons (8,460 L)
Weight: Dry/Full	3,240 lbs (1,470 kg) / 22,620 lbs (10,260 kg)
Propulsion System	VIP Technology
Power Requirement	50 Amp System
Pumps	2
Stainless Steel Jets	43 (Including 4 VIP Jets)
Waterfall	1
Ozone System	Standard
Filtration	EcoPur®
LED Lighting	Waterline
Exclusive Feature	Noise Reduction System
Exclusive Accessories	H2Xercise System*
Premium Options	<b>F W M S</b>



## TRAINER 15 & 15D

Dimensions	180" x 94" (457 cm x 239 cm)
15 Depth	51" (130 cm)
15D Depth	60" (152 cm)
15 Water Capacity	1,595 Gallons (6,038 L)
15D Water Capacity	1,895 Gallons (7,173 L)
15 Weight: Dry/Full	2,700 lbs (1,225 kg) / 16,745 lbs (7,595 kg)
15D Weight: Dry/Full	3,050 lbs (1,383 kg) / 19,595 lbs (8,888 kg)
Propulsion System	VIP Technology
Power Requirement	50 Amp System
Pumps	2
Stainless Steel Jets	43 (Including 4 VIP Jets)
Waterfalls	5
Ozone System	Standard
Filtration	EcoPur®
LED Lighting	Waterline
Exclusive Feature	Noise Reduction System
Exclusive Accessories	H2Xercise System*
Premium Options	<b>F W M S</b>



## TRAINER 12

Dimensions	144" x 94" (366 cm x 239 cm)
Depth	51" (130 cm)
Water Capacity	1,245 Gallons (4,713 L)
Weight: Dry/Full	1,620 lbs (735 kg) / 12,743 lbs (5,780 kg)
Propulsion System	4 Flow Stream Swim Jets
Power Requirement	50 Amp System
Pumps	2
Standard Jets	54 (Including 4 Flow Stream Swim Jets)
Waterfalls	2
Ozone System	Standard
Filtration	EcoPur®
LED Lighting	Colorscape
Exclusive Feature	Noise Reduction System
Exclusive Accessories	H2Xercise System*
Premium Options	<b>F W L J</b>

\*Free with the warranty registration of your spa

# THERAPOOL THERAPY AND FITNESS SPAS



## THERAPOOL D

The Therapool D measures close to 8' x 11' and has a massive 60" depth. It has more than 50 jets with three high-performance flow stream swim jets for resistance training and aquatic exercise. It comes standard with the H2Xercise System\* for rowing and strength training and a stainless steel exercise bar. The Therapool D is the perfect spa for exercise, fitness or family fun and comes standard with waterline LED, a waterfall and stainless steel jets.

## THERAPOOL SE

This fitness spa is jam packed with high-end features but at a surprisingly affordable price. A large flat floor is perfect for aquatic exercise and rehabilitation and three high-performance flow stream swim jets provide a current for walking or running in place. At the end of your workout slip into one of the ergonomic seats and let the hydrotherapy jets help relieve aches and pains and speed recovery for many injuries.

Dimensions	132" x 94" (335 cm x 239 cm)
Depth	60" (152 cm)
Water Capacity	1,060 Gallons (4,013 L)
Weight: Dry/Full	1,825 lbs (828 kg) / 11,780 lbs (5,343 kg)
Propulsion System	3 Flow Stream Swim Jets
Power Requirement	50 Amp System
Pumps	2
Stainless Steel Jets	54 (Including 3 Flow Stream Swim Jets)
Waterfall	1
Ozone System	Standard
Filtration	EcoPur®
LED Lighting	Waterline
Exclusive Feature	Noise Reduction System
Exclusive Accessories	H2Xercise System*
Premium Options	<b>F W M A</b>

Dimensions	132" x 94" (335 cm x 239 cm)
Depth	51" (130 cm)
Water Capacity	910 Gallons (3,445 L)
Weight: Dry/Full	1,825 lbs (828 kg) / 10,525 lbs (4,774 kg)
Propulsion System	3 Flow Stream Swim Jets
Power Requirement	50 Amp System
Pumps	2
Standard Jets	21 (Including 3 Flow Stream Swim Jets)
Waterfall	1
Ozone System	Standard
Filtration	EcoPur®
LED Lighting	Colorscape
Exclusive Feature	Noise Reduction System
Exclusive Accessories	H2Xercise System*
Premium Options	<b>F W L J</b>



## MASTER SPAS CARES FOR CURES

Master Spas is pleased and proud to assist two foundations dedicated to finding and funding the cures for life-hindering diseases.



Along with the Lupus Foundation of America, we have initiated a campaign to help raise awareness and find a cure for this debilitating disease that affects more than 1.5 million Americans. Part of the profit of each spa sold will go to the Lupus Foundation.



Master Spas has joined forces with the Vera Bradley Foundation for Breast Cancer to eradicate breast cancer, a life-threatening disease, by providing financial support for research and research-related projects.

## CARES FOR KIDS



Master Spas and their dealers were part of building a new school complex in 2013 for the NAZ Children's Centre in Rose Hall, Jamaica. This specialized school does an outstanding job with children ages 4-11, as well as working with children with developmental problems. With every Master Spas Swim Spa sold, a donation will be made to the NAZ Children's Centre Scholarship Fund.

For more information, visit [MasterSpas.com/cares](http://MasterSpas.com/cares).



*The H2X swim spa line is manufactured by Master Spas, the world's largest swim spa manufacturer.*



6927 Lincoln Parkway, Fort Wayne Indiana 46804 • 260 436 9100 • [MasterSpas.com](http://MasterSpas.com)



◀ Watch this video to see the Master Spas Advantage.

Master Spas reserves the right to change product specifications or features without notice. Master Spas is a manufacturer of spas and related products, and we stand behind every product we produce pursuant to those representations which are stated in our written limited warranty. Your dealer is an independent businessperson or company and not an employee or agent of Master Spas, Inc. We cannot and do not accept any responsibility or liability for any other representations, statements or contracts made by any dealer beyond the provisions of our written limited warranty.

© 2015 Master Spas, Inc. [sales@masterspas.com](mailto:sales@masterspas.com) LITH2X2015

**REMINDER:** *Never allow anyone to dive into a swim spa. Always enter feet first.*